

[[misc](#)] [[cdo](#)] [[journals](#)] [[fortran](#)] [[mpi](#)] [[paper notes](#)]

CDO = Climate Data Operators

See [CDO Homepage at MPI](#).

Some Usefull Commands

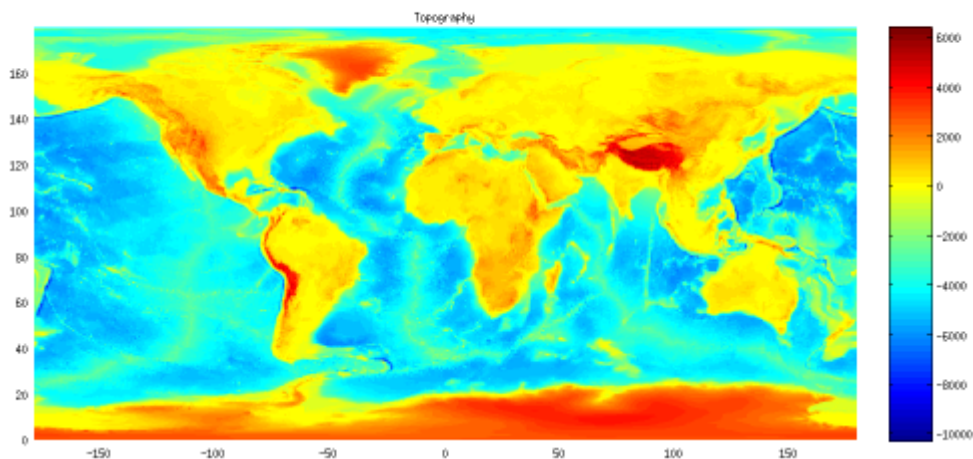
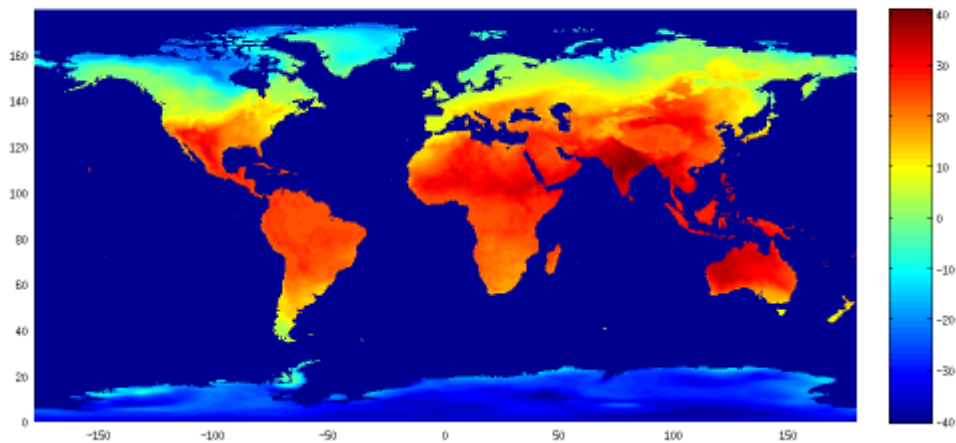
Generate **Land Sea Mask** (Sea=0, Land=1)

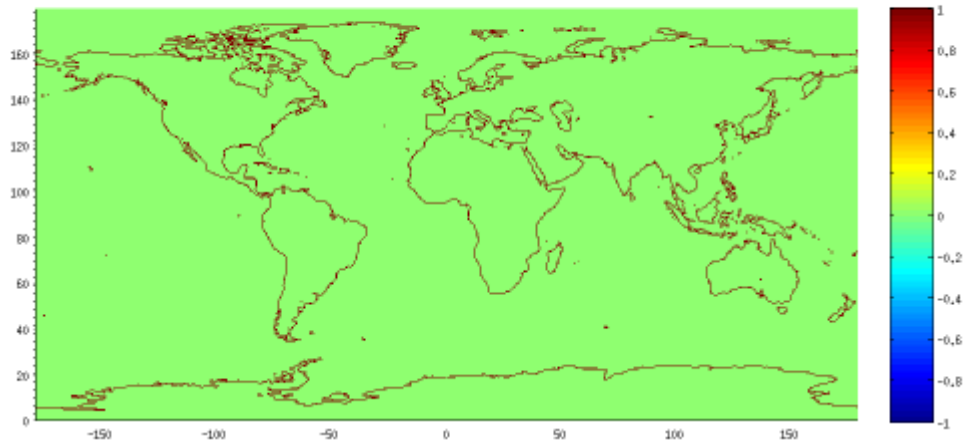
```
cdo -f nc -gtc,0 -remapcon,test.nc -topo land_sea_mask.nc
```

The **topography** on the same resolution is given by:

```
cdo -f nc -remap,test.nc -topo topography.nc
```

Some graphics using the masks:





From:

<http://www.scienceatlas.com/potthast/> - **Roland Potthast Webhome**

Permanent link:

<http://www.scienceatlas.com/potthast/cdo>

Last update: **2015/10/17 18:48**

